

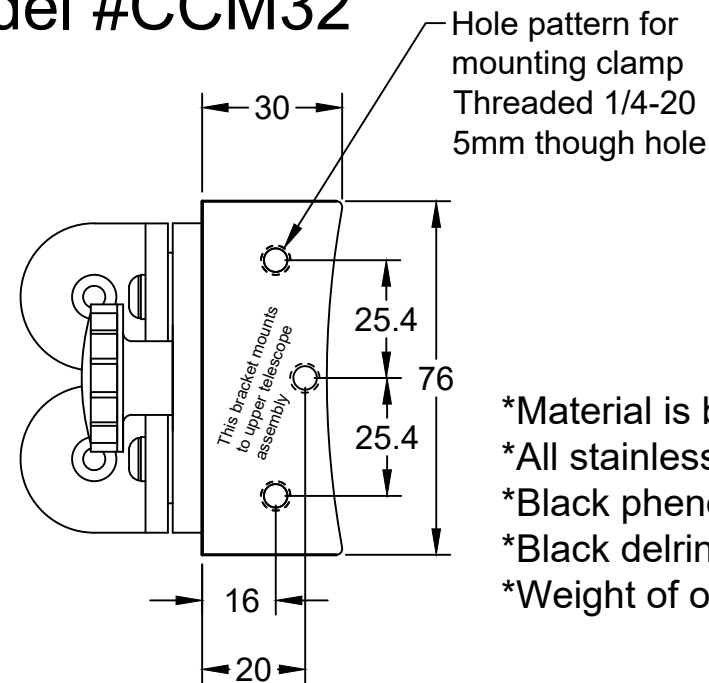
Quick Release Cage Clamp

32mm x 1.5 Truss Tubes Model #CCM32

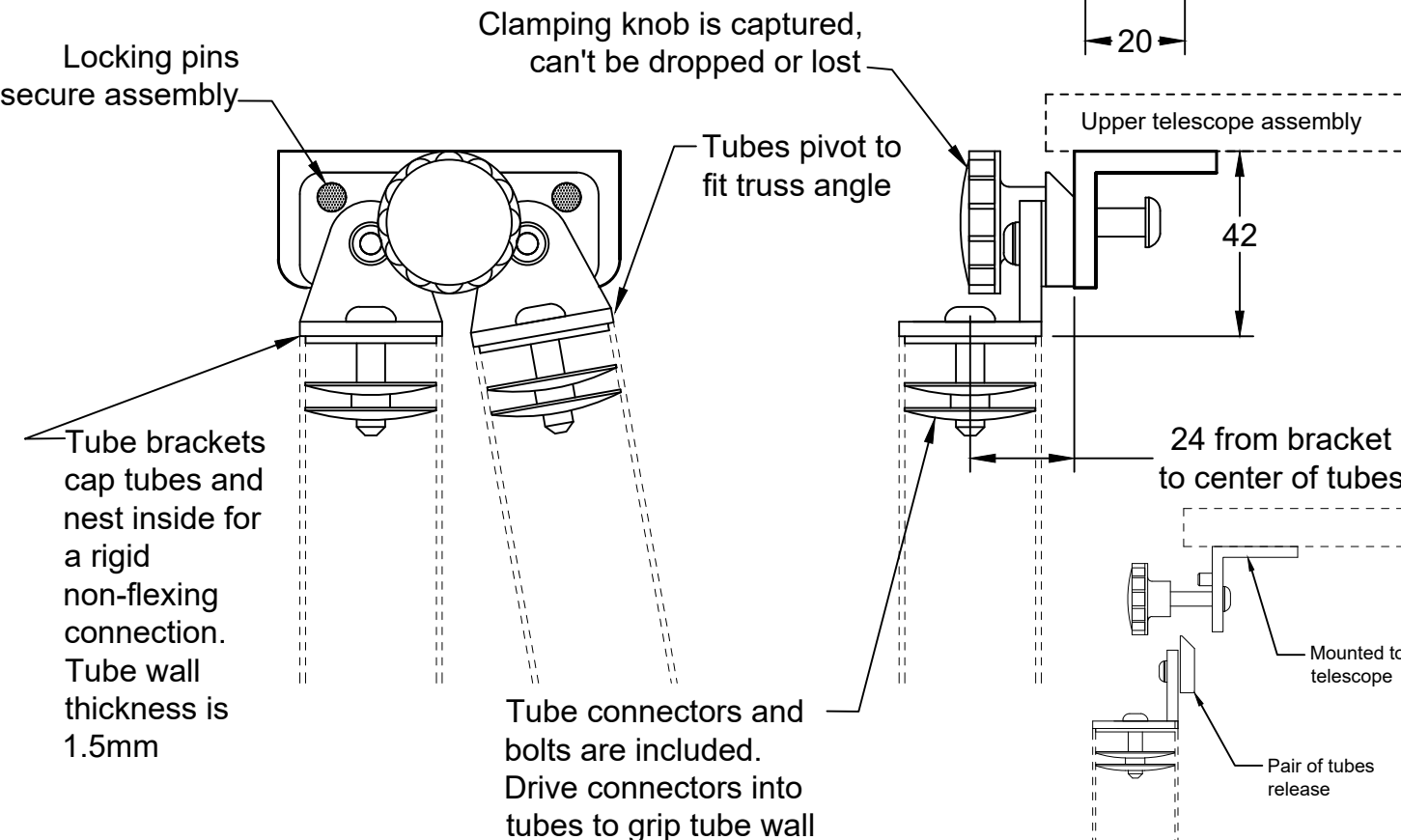
- Tapered holes for quick and smooth engage/release of the upper telescope assembly, even in the dark
- Two locking pins form a rigid connection that maintains your collimation, no creep during the nights viewing
- Truss poles stay connected in pairs to speed assembly/disassembly
- Compact design for rigidity and damping



www.aurorap.com
6644 SE Jerry Dr.
Prineville Oregon 97754
541-362-5965



- *Material is black anodized aluminum
- *All stainless steel hardware
- *Black phenolic knob with brass insert
- *Black delrin bushings at all joints
- *Weight of one assembly is 182 g



Alternate method of assembly.

Brackets are turned, allowing tubes to be under the upper telescope assy. This may be helpful depending on your scope design, or to reduce the size of the mirror box.

