

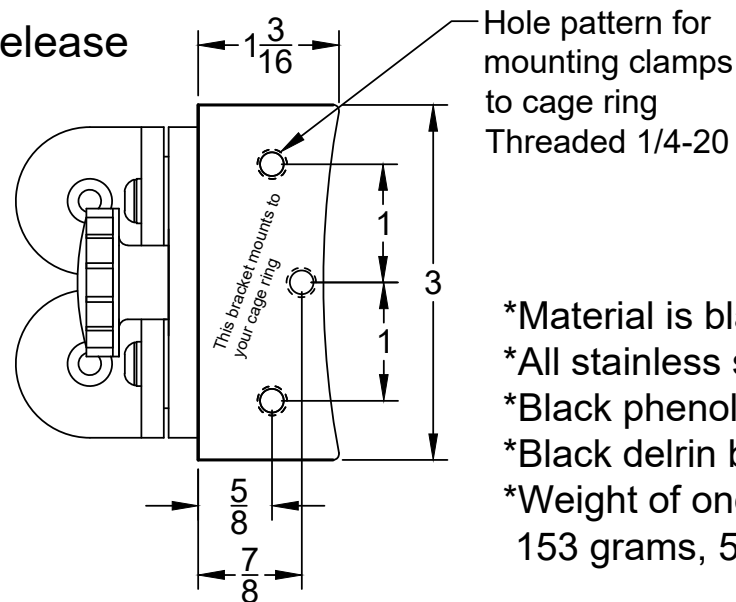
# Quick Release Cage Clamp

## 1in. dia. Truss Tubes Model #CC1000

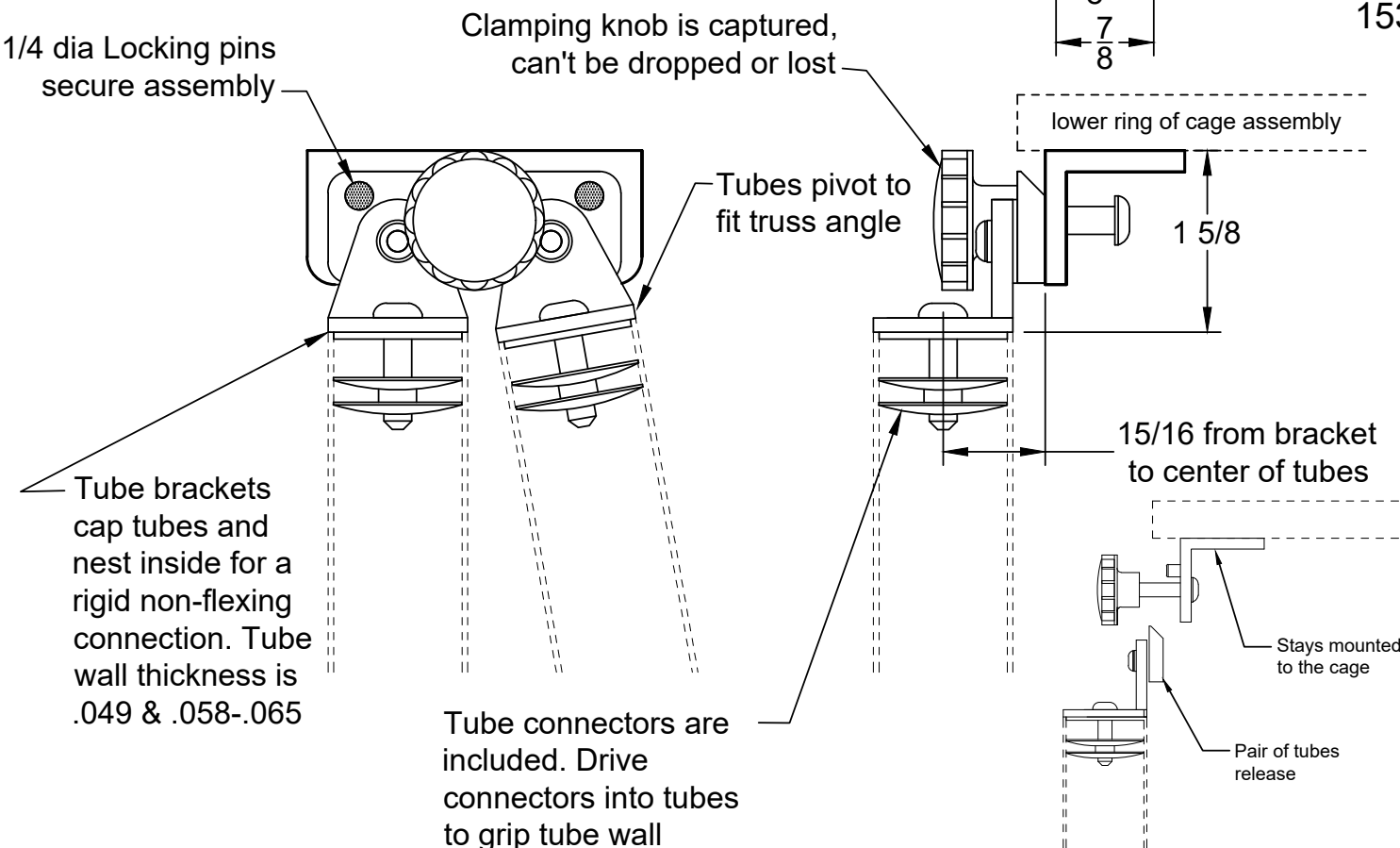


www.aurorap.com  
6644 SE Jerry Dr.  
Prineville Oregon 97754  
541-362-5965

- Tapered holes for quick and smooth engage/release of the secondary cage, even in the dark
- Two locking pins form a rigid connection that maintains your collimation, no creep during the nights viewing
- Truss poles stay connected in pairs to speed assembly / disassembly
- Compact design for rigidity and damping

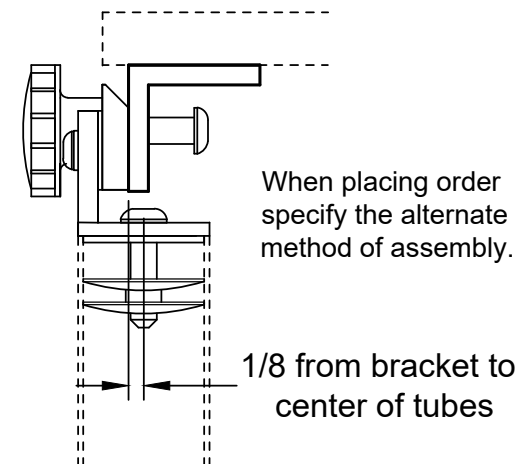


- \*Material is black anodized aluminum
- \*All stainless steel hardware
- \*Black phenolic knob with brass insert
- \*Black delrin bushings at all joints
- \*Weight of one assembly is 153 grams, 5.4 oz.



All dimensions are in inches.

**Alternate method of assembly.**  
Brackets are turned, allowing tubes to be under the cage ring. This may be helpful depending on your scope design, or to reduce the size of the mirror box.



CC1000 spec sheet rev4 4-20-20