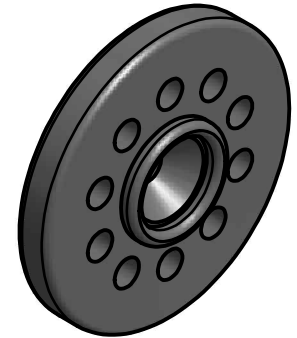


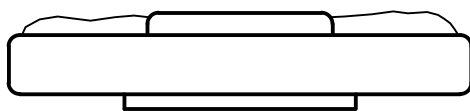
Instructions for How to attache a mirror to the AZ Mirror Cell

Following these directions will ensure a firm grip on your mirror until you are ready to remove it.

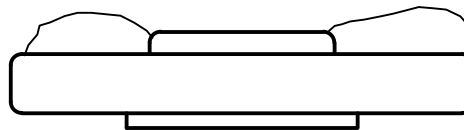
1. See the website for some helpful photos before you begin. Set up a clean work space that is large enough for the mirror and the cell to be placed side by side.
2. Three guides on the cell center the mirror. The o-rings on the guideposts act as bumpers and compensate for variations in mirror diameter. Check the fit of the mirror between the guides, then adjust and/or remove the o-rings as needed to fit the diameter of the mirror.
3. Wipe the backside of the mirror with a clean cloth and if it appears oily, use a small amount of alcohol as a solvent. Check for any obvious dust or debris on the support discs.
4. Open the tube of 732 Dow Corning Silicone that came with your cell, discard the plastic nozzle, you wont need it. Puncture the aluminum seal in the neck of the tube and Squeeze out a bead on paper as a test to see how it flows. You will note this is a fast drying silicone and it will start to form a skin rather quickly, so it's important to place the mirror soon after the silicone is applied. The 3oz tube of silicone supplied with your cell contains 2-4 times what is needed to do the job.
5. The size of the bead should fill the space on the disc over the vent holes and be higher than the center ridge of the disc, see sketch below. A little more silicone is better than a little less since the excess will squeeze out the holes and sides of the discs. It is not necessary or recommended, to apply silicone to the center of the disc.
6. Start applying silicone to the discs, continue until all six are covered and place the mirror onto them as soon as possible. The mirror will settle and make contact with the support discs under its own weight. Avoid moving the mirror after it has settled into place.
7. Do not move the cell for 12 hours while the silicone is curing. After 24 hours, the silicone will be 95% cured and the cell may be installed.



Support disc



Not enough



Looks good



www.aurorap.com
20420 Boones Ferry Rd. NE
Aurora, Oregon 97002
503-678-6300
Applying RTV Rev1 1-14-13